

INSTALLATION INSTRUCTION



DICKEY-JOHN GAC 2500-UGMA PRODUCT CALIBRATION DOWNLOAD

Product calibration files are located at the DICKEY-john website for loading to the GAC 2500-UGMA Grain Moisture Analyzer.

IMPORTANT: Before downloading calibrations, verify the USB memory device is formatted as FAT and NOT FAT32. See “Formatting USB Memory Device” section for formatting instructions.

DOWNLOAD CALIBRATIONS FROM WEBSITE

If a USB memory device with preloaded calibration files is already in your possession, proceed to the “Load Calibrations to GAC 2500-UGMA” section.

NOTE: Root directory (such as F:) is the first directory that shows when opening a drive. If having issues locating the root directory, go to “Start/My Computer” and open the USB memory device.

To download calibrations to a USB memory device:

1. Visit the DICKEY-john website at www.dickey-john.com/Products/Analytical/Moisture Testing/GAC2500-UGMA Grain Analysis Computer/Get Support.
2. Insert USB memory device into computer’s USB drive.
 - Remove all existing files from USB memory device.
3. Click on “NTEP and OFFICIAL Calibrations plus Check Test”.
 - Product calibration files are saved in a zip format and require extraction before loading to the GAC 2500 instrument.
4. Copy all extracted files or the desired individual files and paste these files to the root directory of the USB memory device.
5. Wait for files to finish copying and remove USB memory device.

NOTE: Refer to the back of this instruction for how to format a USB memory device.

LOAD CALIBRATIONS TO GAC 2500-UGMA

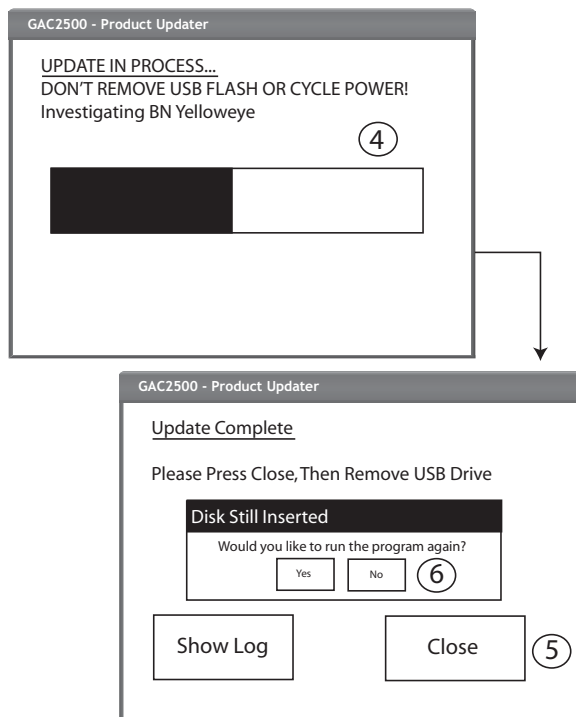
1. Power OFF the GAC 2500-UGMA.
2. Insert the USB memory device into the GAC 2500-UGMA USB port located on the front panel.
3. Power on instrument.
4. Files automatically begin loading to the instrument. The program will back up all existing calibration files and install the new ones.
5. Press the **Close** button to exit.
6. When update is complete, press ‘No’ to avoid running the program again.

NOTE: For technical assistance, please contact DICKEY-john technical support at 1-800-637-3302.

INSTALLATION INSTRUCTION



Figure 1
Product Updater



7. Remove the flash drive and the instrument continues to powerup.
8. Once the machine is powered on, custom calibrations that were not included in the updater package can be restored by navigating to the backup directory on the flash drive named <machine serial number>_OldCals_<date(yyyymmdd)>_<time(HH:mm)>. These calibrations are reloaded from the Setup menu.

RELOADING CUSTOM CALIBRATIONS TO GAC 2500-UGMA

NOTE: The USB memory device must be inserted into the instrument to display the Load New Product button.

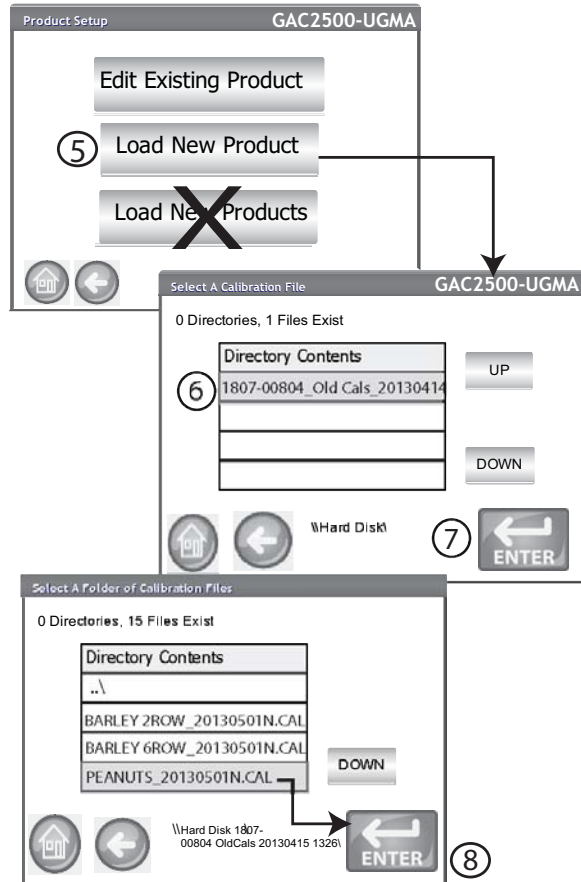
1. Insert USB memory device into the GAC 2500-UGMA USB port located on the front panel.
2. At the Main Menu screen, press the **Setup** button.
3. Enter the Name and Password, if required, or press **Enter** to proceed.
4. At the Setup screen, press the **Product** button.
5. At the Product Setup screen, press the **Load New Product** button. **Do not use the Load New Products button to reload custom calibrations.**
6. To load a single product, press the directory contents file to highlight.
7. Press the **Enter** button to open the directory.
8. In the Directory Contents window, press the custom calibration to highlight and **press** the Enter button.

INSTALLATION INSTRUCTION



Figure 2

Re-Load Custom Calibrations



Directory structure to find custom calibrations:

<machine serial number>_OldCals_<date(yyyyMMdd)>_<time>(HHmm)>

INSTALLATION INSTRUCTION



FORMATTING A USB MEMORY DEVICE

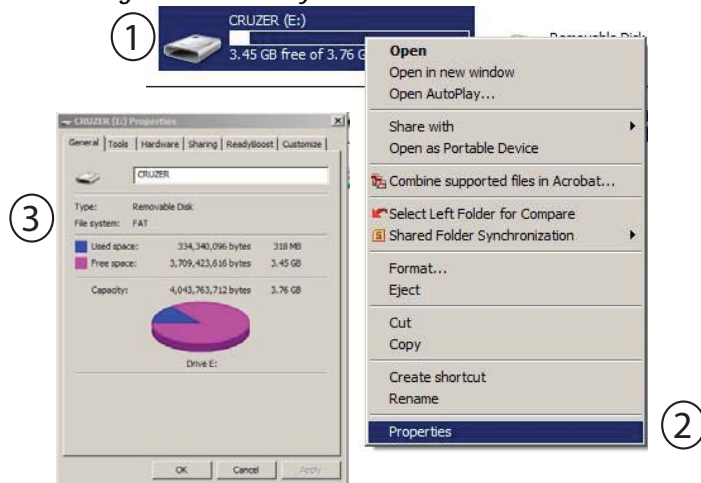
To verify a memory device is FAT:

1. Insert the USB memory device into the computer.
2. Navigate to “My Computer”, locate the directory for the memory device, and click “Properties”.
3. Look at the ‘File System’ type under the General Tab and verify the device is FAT.

NOTE: If the device is not FAT formatted, proceed to next step for reformatting.

Figure 3

Verify Formatting of USB Memory Device



Reformat memory device to FAT:

4. In “My Computer”, right click on the memory device directory.
5. Click “Format”.
6. Select “FAT” as the file system format.
7. Click “Start”. The USB memory device is now FAT formatted.

Figure 4

Formatting Memory Device to FAT

