



AUTO SECTION CONTROL SOFTWARE REPROGRAMMING VERSION 2.5

To reprogram an Auto Section Control terminal with new software, a USB memory device with an LED indicator is required to transfer data from the computer to terminal.

NOTE: Loading previous software upgrades is not required.

A FAT32 formatted USB memory device is required. If the device is already FAT32 formatted, proceed to Auto Section Control Reprogramming.

Formatting a USB memory device to FAT32 in Windows:

1. Insert USB memory device into computer.
2. Go to My Computer and double click the icon.
3. Select the appropriate drive.
4. Right click on the drive.
5. Select Format.
6. Select a File System format of FAT32.
7. Click on Start.
8. Click OK to the new memory device warning. If it is not a new USB memory device, verify that the data has been saved and click OK. If the data has not been saved, click Cancel, save the data, and go back to step 3 in case the USB memory device is not FAT32.
9. The USB memory device will now be formatted and a Format Complete prompt will appear.
10. Click OK.
11. Close the format window (if applicable).
12. The card is ready for use.

AUTO SECTION CONTROL REPROGRAMMING

CAUTION

All constants will reset to the factory default settings during software reprogramming. It is recommended to record all constants associated with auto section control to re-enter after the new software version is loaded.

Computer:

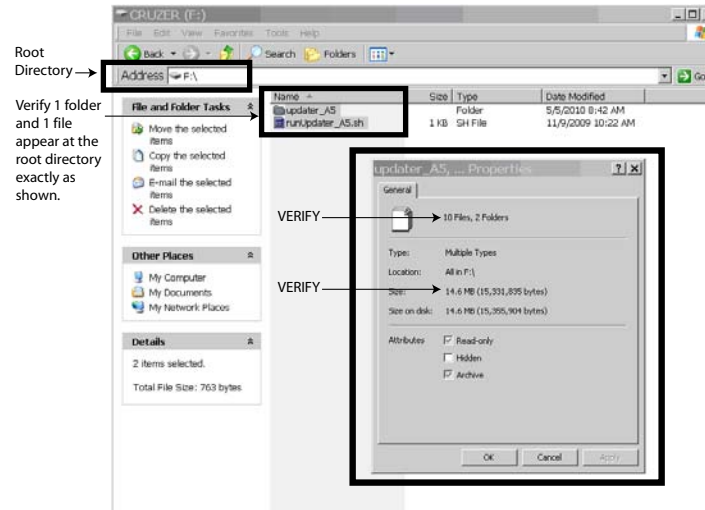
1. Insert USB memory device into computer.
2. Select and double click the file name "USB_Image_DjSC_P02_50.zip" to save to a computer in a known location.
3. Right click on compressed zip file and extract contents onto the USB memory device.
 - It is important for the USB device to be clean before loading files.
 - One file and one folder should be the only 2 items loaded at the root directory, refer to (Figure 1).



4. Verify that 11 files and 2 folders are found by performing the following:
 - Click “Edit”, “Select All” to highlight the updater_A5 folder and the runUpdater_A5 file.
 - Click “File”, “Properties” to open Properties window.
 - Verify that file size is 14.6 MB +/- .1 MB.

Figure 1

Extracting Software Folders and Files



5. When transfer is complete, remove USB memory device from computer.

Auto Section Control Terminal:

1. Power on the Auto Section Control system and wait for the “Initialize please wait” or field screen to appear on the terminal.

Figure 2

Initializing Screen



2. Insert USB memory device into Auto Section Control terminal.



Figure 3

Insert USB Memory Device



WARNING: The LED on USB memory device will start blinking and a screen appears in approximately 25 seconds. If the USB LED light is solid after 25 seconds and the below screen in Figure 4 does not appear, remove and return to step 1.

Figure 4

Screen



3. When the screen appears, press the **Update (2>>)** button. Wait for the text "Done" to appear in the middle of the screen and for the LED light on the USB memory device to stop flashing.
4. Press the **Reboot (4>>)** button. Do not press the **Exit** button.
5. When the DICKEY-john screen appears, terminal reprogramming is complete.

Figure 5

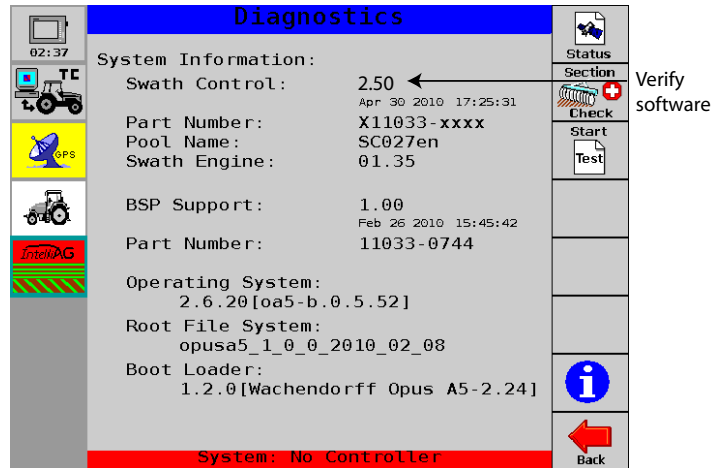
DICKEY-john Screen



6. Remove the USB memory device.
7. At the Auto Section Main Work screen, press the **Diagnostics** button.
8. At the Diagnostics screen, press the **Information** button.
9. Verify that the current software version appears on screen.



Figure 6
Diagnostics Screen



10. Transfer is complete.

CAUTION

If a shutoff delay time is entered for engaging and disengaging clutches, it is recommended that a GPS calibration be performed after installing the new software upgrade. Shutoff delay times are entered as constants at the IntelliAg Module Configuration screen.



Contact DICKEY-john Technical Support Group at 1-800-637-3302 for any assistance or questions.